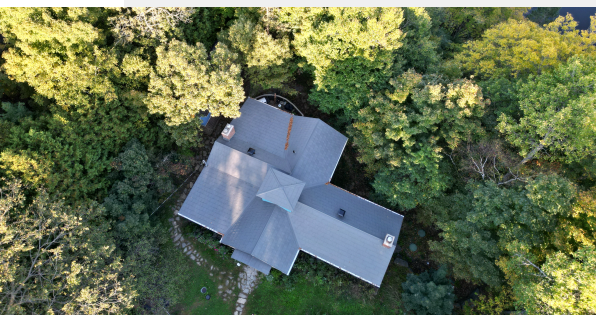




LIABILITY & WARRANTY EXCLUSIONS



Rydel Liability & Warranty Exclusions

1. General Roofing Warranty Exclusions (Sloped roofs with 3/12 pitch or greater)

The following conditions and deficiencies are not covered under the Rydel Roofing workmanship warranty. Any failure or damages arising from these conditions will void warranty coverage:

1.1 Attic Insulation & Ventilation

- All attics must have a minimum of R-50 insulation and meet provincial building code requirements, which vary by province.
- All soffit lines, including eaves, must have proper airflow, with minimum openings of 12 inches in width.
- Baffles must be installed a minimum of 6 feet from the wall edge to ensure proper airflow.
- Cathedral ceilings require continuous baffle installation extending to the ridge, with a minimum 2-inch opening at the ridge for ventilation.
- A vapor barrier must be present on all ceilings and walls to prevent heat loss into the attic.

1.2 Ice Damming & Water Damage

- Dead valleys must be installed with at least one (1) ply flat roofing membrane extending at least 36 inches from the center of the valley.
- Ice damming caused by inadequate insulation, ventilation, or other non-compliance with section 1.1.
- Ice damming due to natural climate variations during winter months is not covered if the installation meets manufacturer guidelines.
- Blowing snow and elements entering ventilation openings do not qualify as leaks under the Rydel craftsmanship warranty.

1.3 Roof Decking & Material Compliance

- Roofing decks with less than 3/8-inch sheathing will void the Rydel workmanship warranty.
- Failure to replace damaged sheathing or boards that compromise roof integrity.
- Failure to replace vents will void the warranty if leaks occur due to pre-existing vent issues.
- Synthetic underlayment must be installed to maintain warranty coverage.

1.4 Third-Party Modifications & Damage

- Third-party ice or snow removal that causes damage will void the Rydel warranty.
- Any unauthorized repairs, modifications, or accessory installations (including ventilation changes) will void the entire roof warranty.
- Solar panel installations after a roof replacement must be inspected by Rydel to maintain warranty coverage.
- Condensation issues due to improper venting of kitchen or bathroom vents into the attic.
- Chimney or flue issues due to improper installation or lack of a chimney chase

1.5 Warranty Transfer & Product Lifespan Limitations

- Warranty transfers must be completed within 60 days of property ownership transfer; otherwise, the warranty is void.
- Failure to replace skylights or sun tunnels older than 15 years will void coverage for leaks or damages caused by aging materials.
- Manufacturer warranties are the responsibility of the manufacturer; Rydel may assist with claims but does not guarantee approval or cover denied claims

1.6 Acts of Nature & Unforeseen Circumstances

- Hail, hurricanes, tornadoes, or other natural disasters are not covered under the Rydel craftsmanship warranty.
- Oil canning in metal roofing installations per manufacturer specifications.
- Damage to eavestrough on metal and rubber roofing projects that do not have ice guard protection placed covering all roof eave areas.

Warranty Breakdown

Bronze (10-Year Workmanship):

- Transferable within 60days (registered to Rydel)
- No manufacturer material coverage
- No interior damage coverage

Silver (20-Year Workmanship):

- Transferable within 60 days (registered to Rydel)
- No manufacturer material coverage
- Interior damage coverage up to \$2,000

Gold (30-Year Workmanship):

- Transferable within 60 days (registered to Rydel)
- No manufacturer material coverage
- Interior damage coverage up to \$2,000

Rydel does not provide any warranty for work that has not been paid in full, as outlined and agreed upon in the signed contract.

2. Flat Roofing Warranty Exclusions

2.1 Drainage & Insulation Requirements

- Interior drains must be insulated to prevent condensation and ice backup.
- Failure to maintain clear, debris-free drains/scuppers leading to leaks.
- Flat roofs with interior attic space must have R-50 insulation and meet provincial building codes; leaks caused by condensation or ice damming.

2.2 Roof Slope & Standing Water

- A minimum 2% slope is required for all flat roofing installations; failure to comply will void the warranty if a leak is deemed due to inadequate sloping of the roof.
- Rydel is not responsible for standing water exceeding the manufacturer's 72-hour allowable duration.
- Deterioration of granulated cap sheets due to standing water.

2.3 Material Compliance & Third-Party Modifications

- Roofing decks must have a minimum of 5/8-inch sheathing; failure to comply voids the warranty.
- Failure to replace damaged sheathing or boards affecting roof integrity.
- Condensation issues from improperly installed chimneys or vents by third parties.
- Manufacturer warranties are the responsibility of the manufacturer; Rydel may assist with claims but does not guarantee approval or cover denied claims.
- Third-party modifications or maintenance that result in damage.
- Leaks caused by mechanical unit failure.
- Failure to replace skylights older than 15 years causing leaks.

Warranty Breakdown

Bronze (5-Year Workmanship):

- Transferable within 30 days (registered to Rydel)
- No manufacturer material coverage
- No interior damage coverage

Silver (10-Year Workmanship):

- Transferable within 30 days (registered to Rydel)
- No manufacturer material coverage
- Interior damage coverage up to \$2,000

Gold (15-Year Workmanship):

- Transferable within 30 days (registered to Rydel)
- No manufacturer material coverage
- Interior damage coverage up to \$2,000
- Available only with 2% or greater sloping package provided by Rydel

Rydel does not provide any warranty for work that has not been paid in full, as outlined and agreed upon in the signed contract.

3. Siding Warranty Exclusions

3.1 Acts of Nature & Environmental Factors

- Damage caused by hail, hurricanes, tornadoes, or other natural disasters.

3.2 Manufacturer's Warranty & Responsibility

- Manufacturer warranties are solely the responsibility of the manufacturer. Rydel may assist with claims but does not guarantee approval or cover denied claims.

3.3 Installation & Structural Compliance

- Siding installed less than 8 inches above grade leading to deterioration is not covered (height requirements may vary by province or municipality).
- Failure to replace drywall sheathing or black fibrous board, leading to siding bowing.
- Oil canning in dark-colored siding installations per manufacturer specifications.
- Fascia boards over 8 inches must be installed with at least 26-gauge steel or 0.046 aluminum; failure to comply voids the warranty.
- Faulty windows causing leaks behind siding.
- Failed caulking is not covered by Rydel warranty after 5 years.

3.4 Third-Party Work & Additional Modifications

- Damage caused by third-party driveway snow removal.
- Shutoff of hydrometers for siding installation is the homeowner's responsibility and is not included in Rydel's pricing.

Warranty Breakdown

Bronze (10-Year Workmanship):

- Includes reuse of existing roof ventilation
- Transferable within 30 days (registered to Rydel)
- No manufacturer material coverage
- No interior damage coverage

Silver (15-Year Workmanship):

- Transferable within 30 days (registered to Rydel)
- No manufacturer material coverage
- Interior damage coverage up to \$2,000

Gold (20-Year Workmanship):

- Transferable within 30 days (registered to Rydel)
- No manufacturer material coverage
- Interior damage coverage up to \$2,000

Rydel does not provide any warranty for work that has not been paid in full, as outlined and agreed upon in the signed contract.

4. Soffit, Fascia and Eavestrough Warranty Exclusions

4.1 Acts of Nature & Environmental Factors

- Soffit and fascia are not covered by winds exceeding 140KM per hour.
- Fascia blow-off if the existing substrate has failed (rotten wood, moisture, poor backing).
- Falling debris, limbs, hail, causing damage to soffit, fascia, and eavestrough.
- Eavestrough damage from falling snow from existing roofing not installed by Rydel.
- Roofing installed by Rydel in either metal or rubber, where ice guards are not installed, covering all eavestroughs causing damage to eavestrough.

4.2 Installation & Structural Compliance

- Fascia boards over 8 inches must be installed with at least 26-gauge steel or 0.046 aluminum; failure to comply voids the warranty.

4.3 Third-Party Work & Additional Modifications

- Alterations to eavestrough causing failed joints, damage to the surface area that is performed by another contractor other than Rydel.

Warranty Breakdown

Bronze (5-Year Workmanship):

- Transferable within 30 days (registered to Rydel)
- Manufacturer coverage to vary between 15-25 pro-rated based on manufacturer

Rydel does not provide any warranty for work that has not been paid in full, as outlined and agreed upon in the signed contract.
